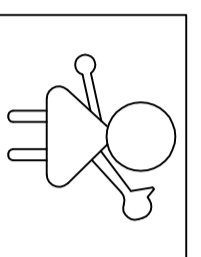


ROHS

CONFIDENTIAL2

MD102A VGA CMOS CAMERA MODULE

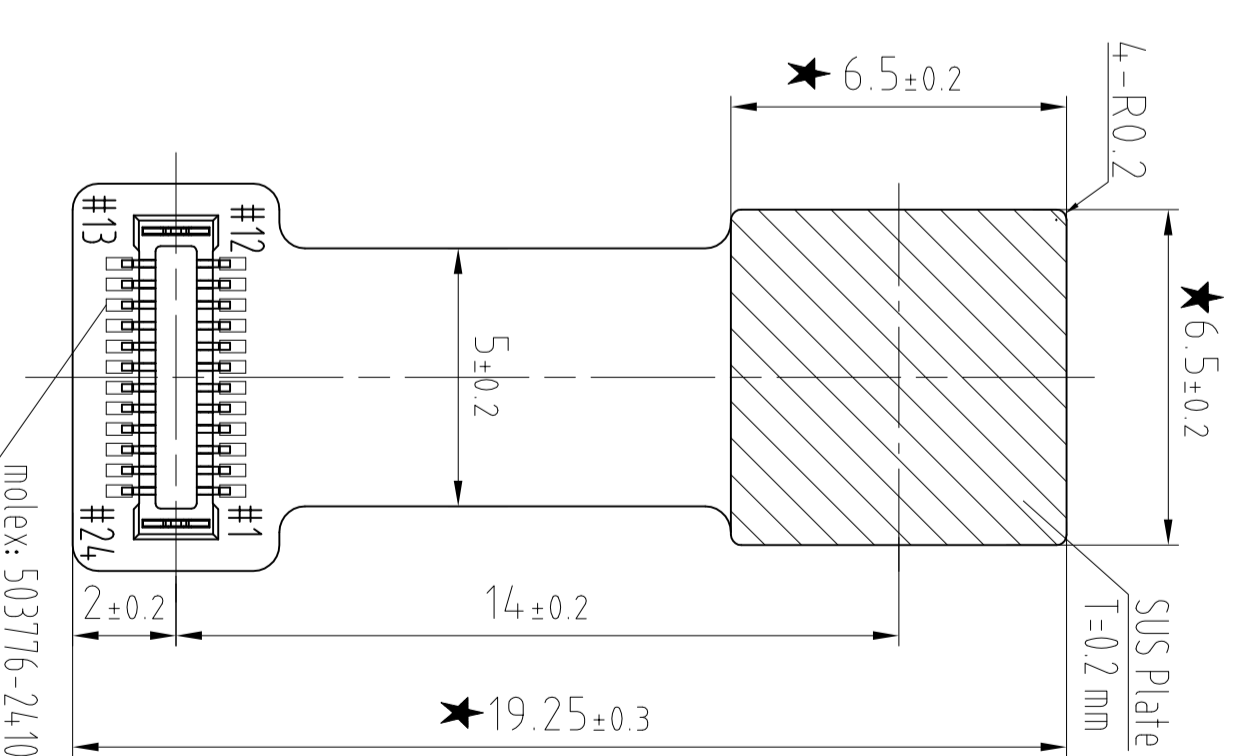
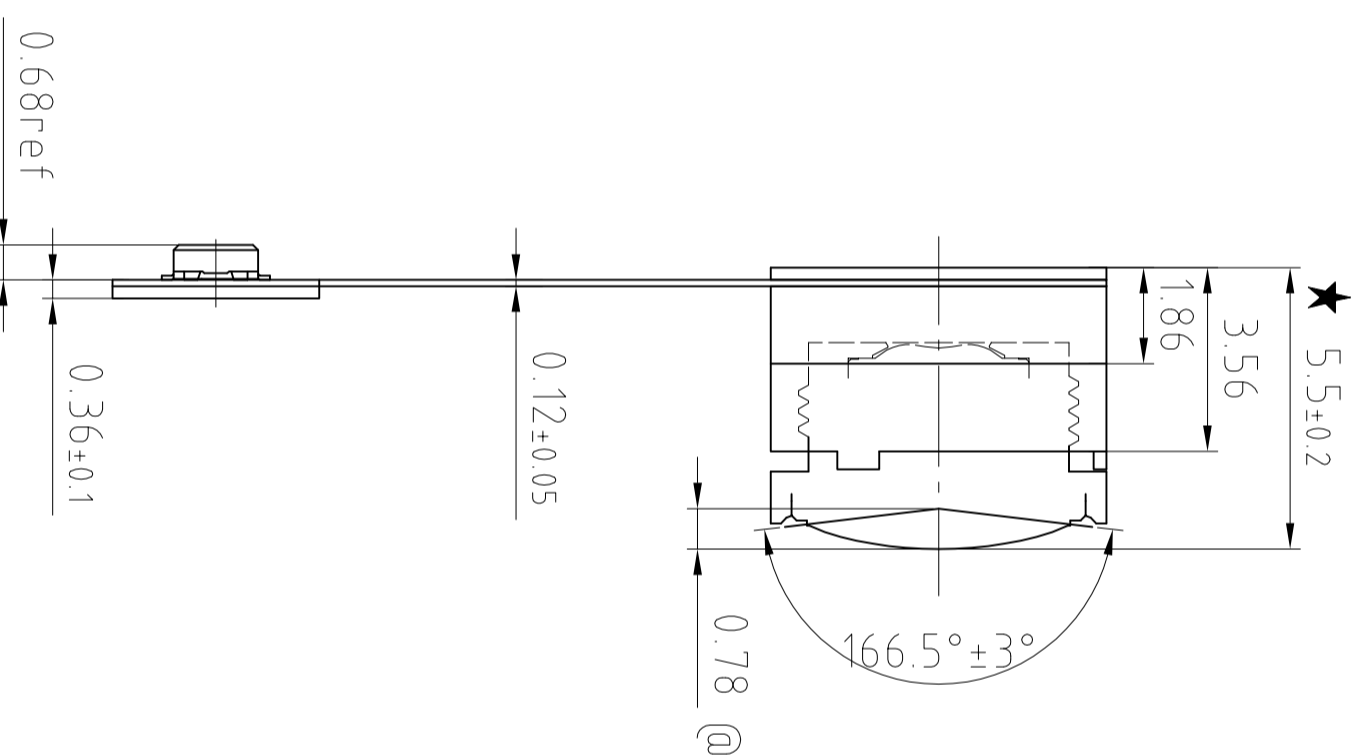
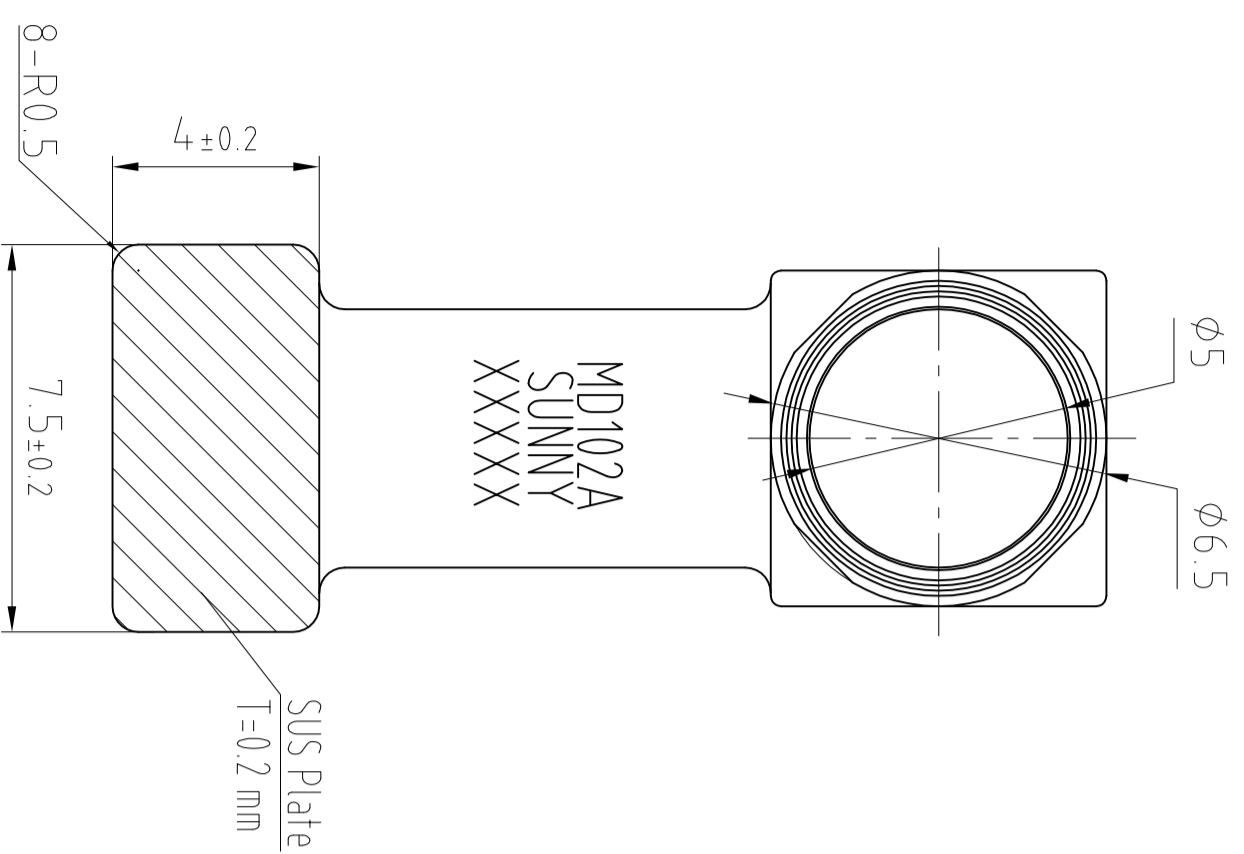
NO.	CONTENT OF THE CHANGES	DATE	DESIGN
01	First version	2015-04-16	Jin ZHANG
02	Correct the PV and add the filter type	2016-05-13	Jin ZHANG
03			



480

640

Capture direction



note: 1, "★" are marked as important concerns.

2, XSHUTDOWN low enable.

3, IIC address: 0xC0 (write), 0xC1 (read).

★ 4, DVDD by internal power supply.

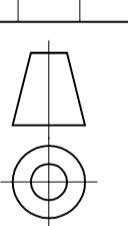
@ 5, IR CUT Filter: T=50%@639±10nm.

Pin	#01	#02	#03	#04	#05	#06	#07	#08	#09	#10	#11	#12	#13	#14	#15	#16	#17	#18	#19	#20	#21	#22	#23	#24	
	DGND	XCLK	DGND	XSHUTDOWN	STROBE	DGND	MDP	MON	DGND	MCP	MCN	DGND	ULPM	FSIN	NC	DGND	SIO_D	SIO_C	DGND	D0VDD	18V	DGND	AVDD	28V	AGND

EFL	0.83	Chip Type	OV07251-G04A-1F
F.NO	2.0	Array Size	640x480

View Angle	166.5°±3° (Diag.)	Lens Size	1/7.5 inch
Distortion	<-3/54%	DVDD	1.5V
Image quality	center>300 LW/PH; corner>200 LW/PH(AT=0.4M)	AVDD	2.8V
Focusing Range	0.05M - ∞(AT=0.4M)	D0VDD	1.8V

Key Para			
----------	--	--	--



Name
MD102A CAMERA MODULE

Design	Check	Craft	Audit	Standard	Approve	Drawing mark	Drawing NO.
Jin ZHANG 2015-04-16	徐本伟	朱移良	罗孟杰		潘峰	S	MD102A-0JG

1 2 3 4 5 6 7 8 9 A3