

AltekImageViewer 1.30 Quick SOP

Version: 0.1

Proprietary and Confidential-Preliminary Release

This document contains confidential, proprietary information that is property of altek corporation. Do not disclose to or duplicate for others except as authorized by altek corporation.

Copyright ©2019 Altek Corp.
All Rights Reserved

Altek Confidential

Revision History

Revision	Date	Modification	Author
0.1	2019/2/21	Initial Version	Jonathan/YilanChang

Altek Confidential

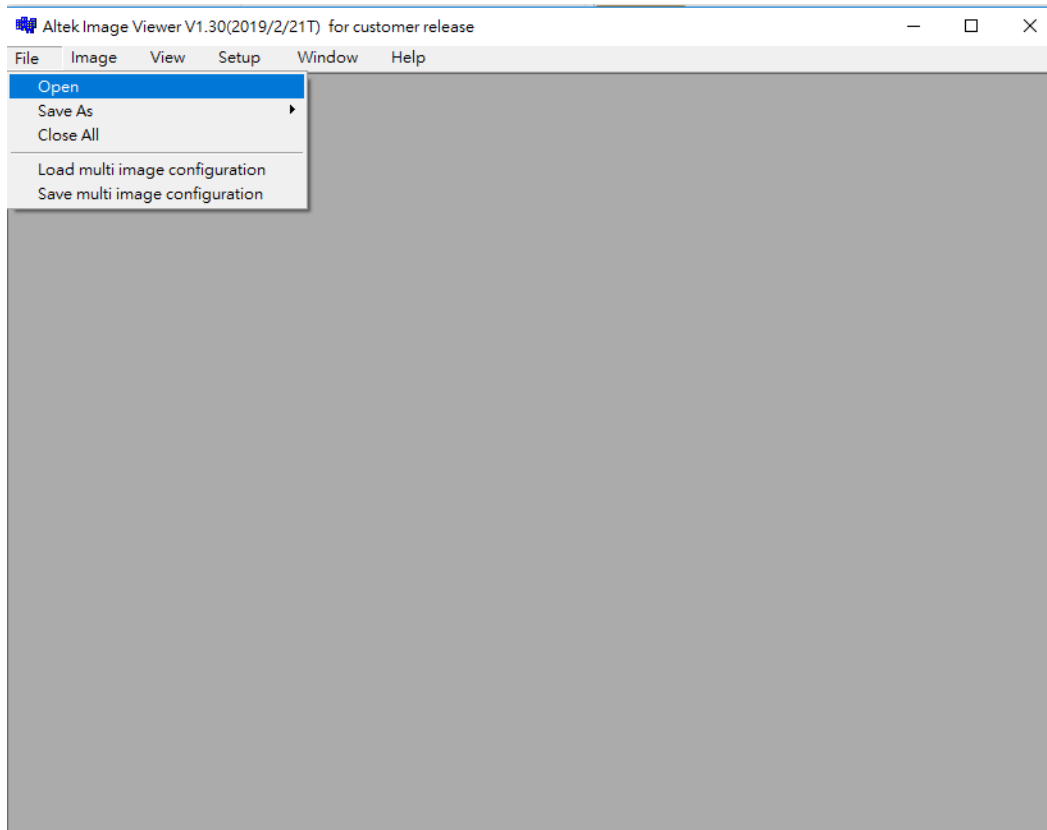
Table of Content

Viewing IR Image.....	5
Viewing a Disparity Depth Map.....	8

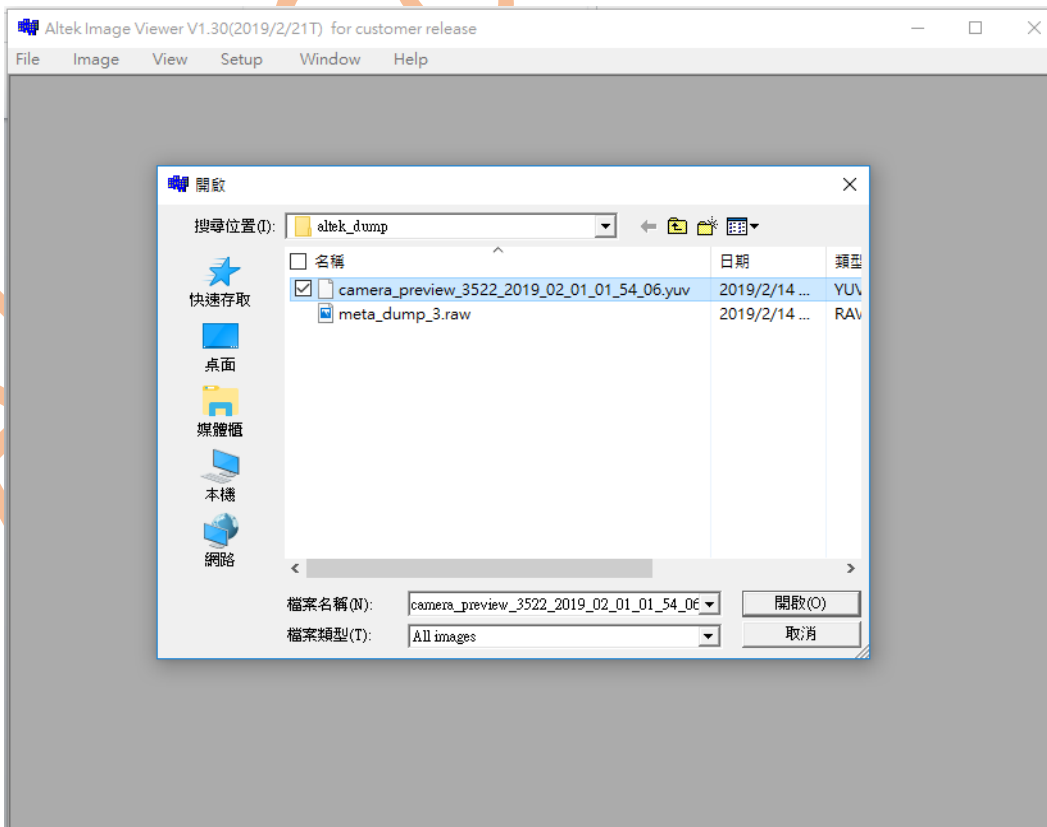
Altek Confidential

● Viewing IR Image

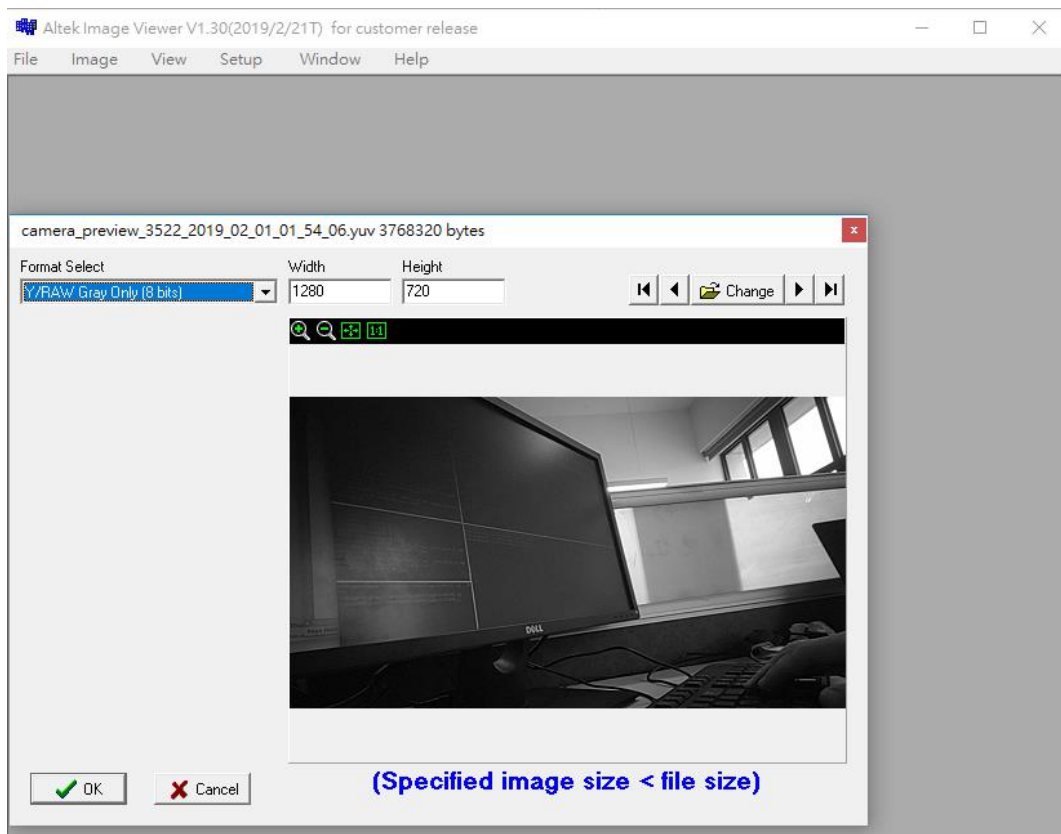
1. Open the application
2. In the “File” menu, click “Open”



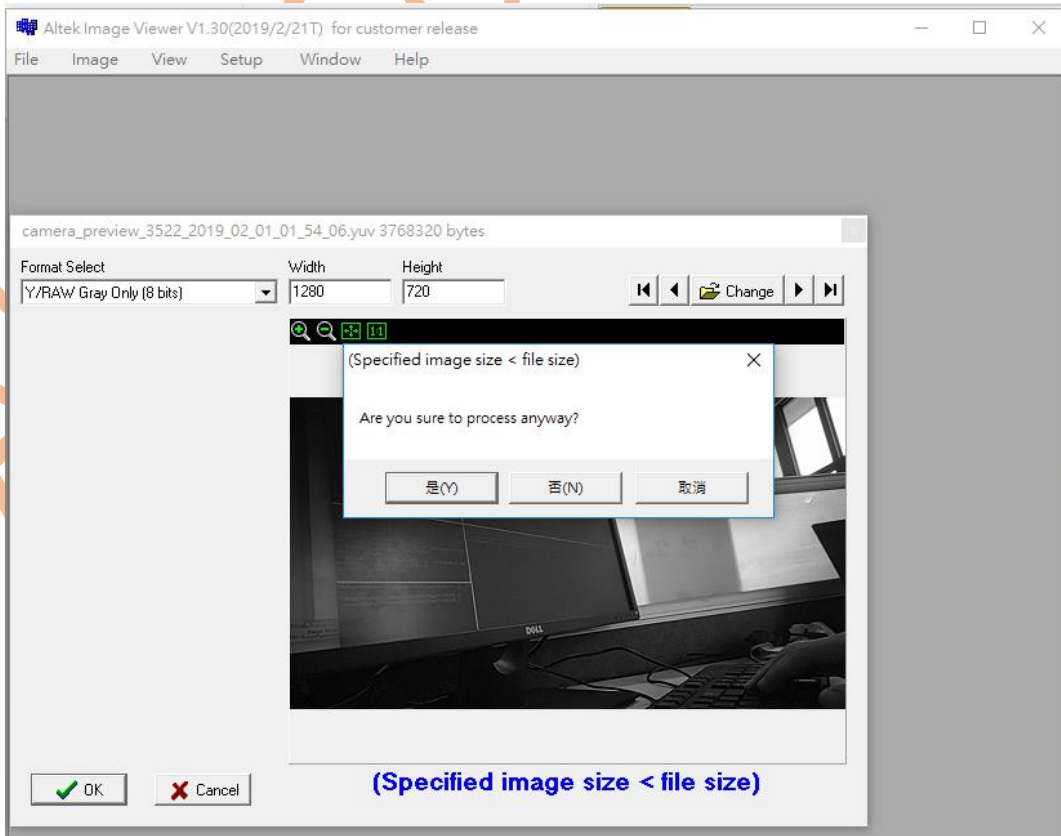
3. Go to the image folder location and select the relevant IR image; click “OK”



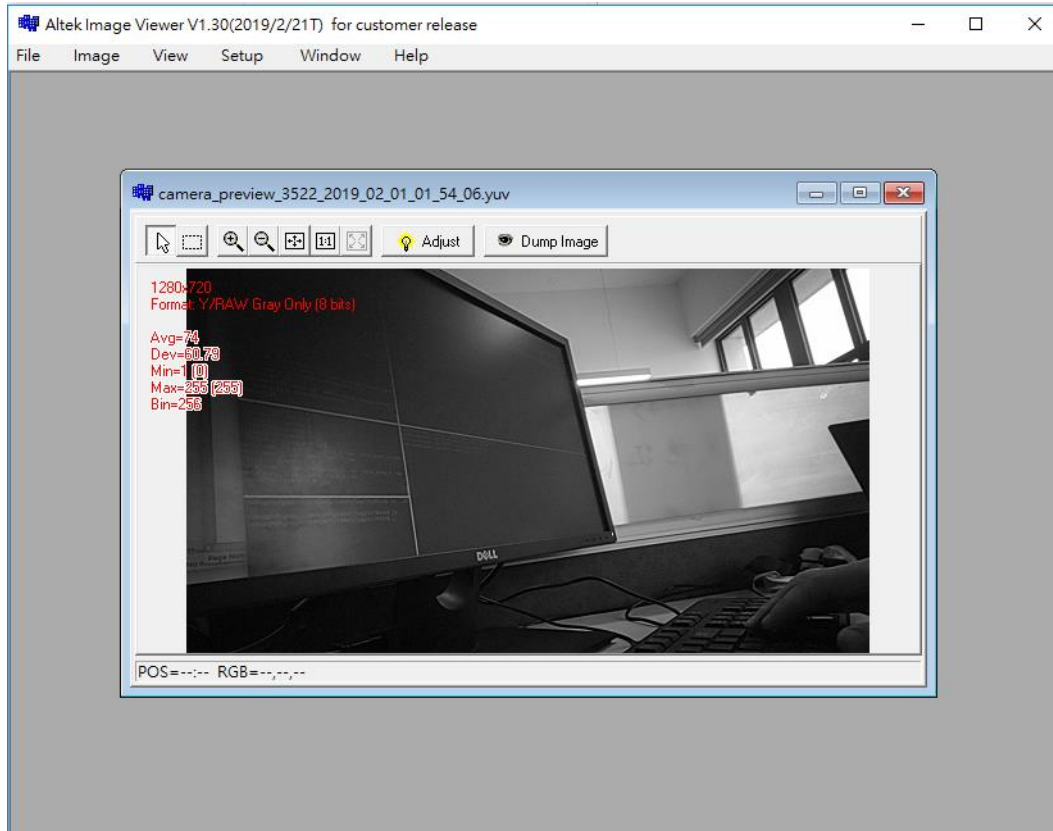
- Under “Format Select”, choose **Y/RAW Gray Only (8 bits)**, then enter the image resolution (ex. “Width”: **1280**, “Height”: **720**); click **“OK”**



- If the “Specified image size < file size” dialogue box appears, select **“Yes”**



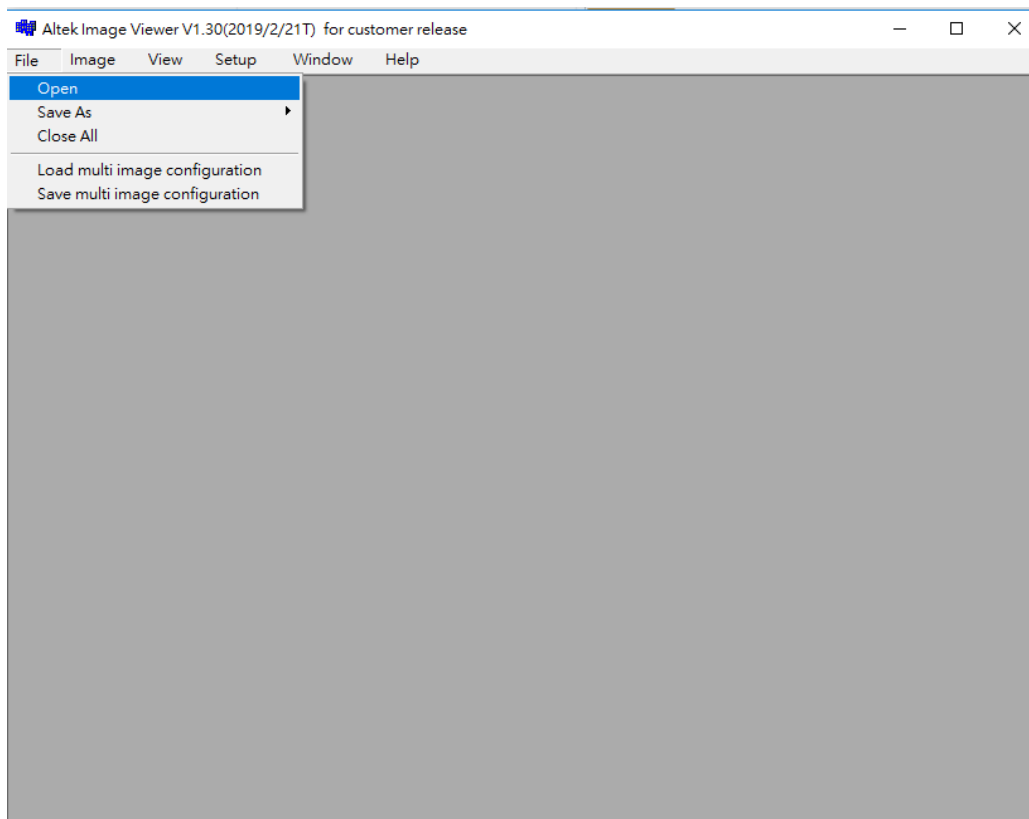
6. IR Image will show up in an individualized UI:



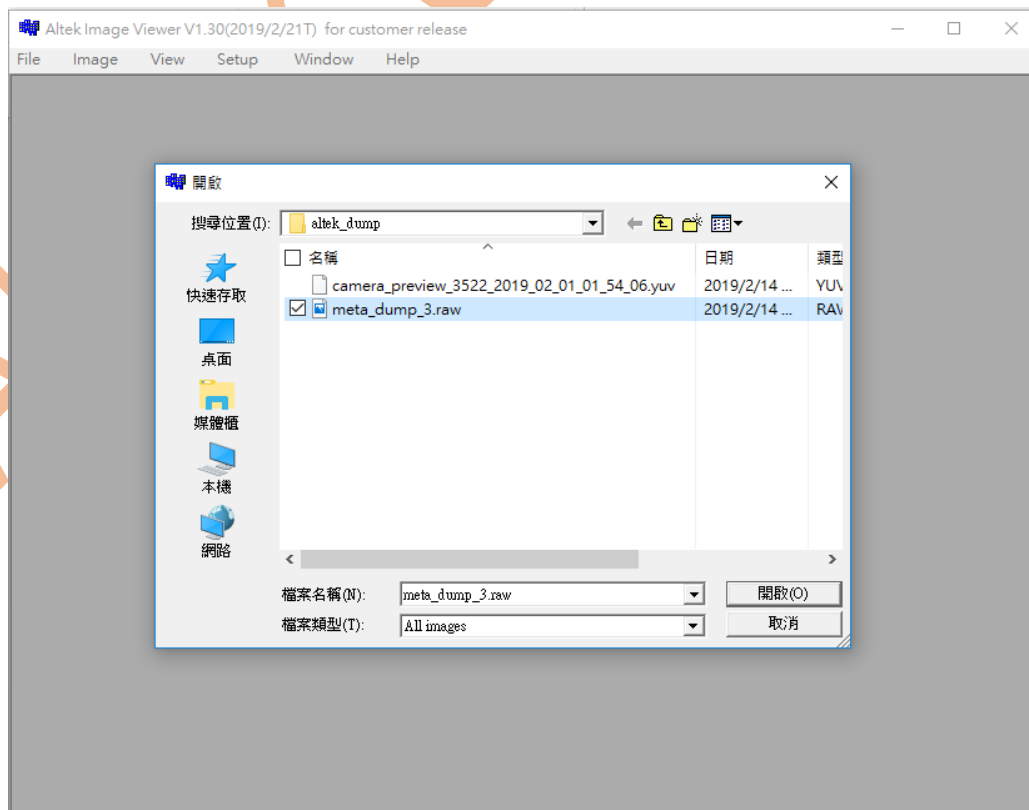
Altek Confidential

● Viewing a Disparity Depth Map

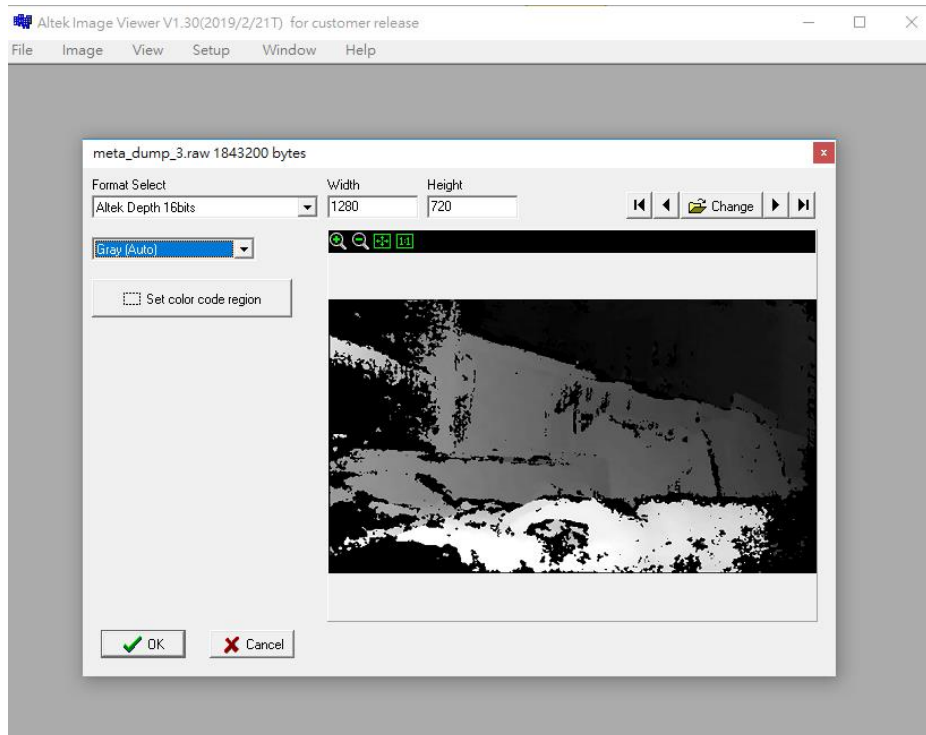
1. Open the application
2. In the “File” menu, click “Open”



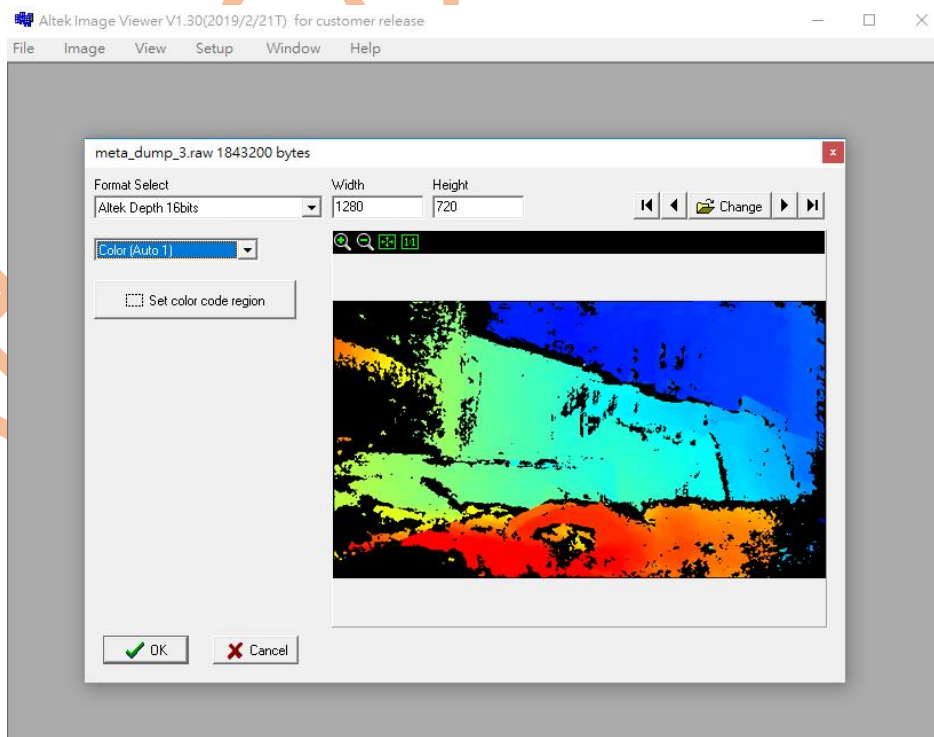
3. Go to the image folder location and select the relevant depth file; click “OK”



4. Under “Format Select”, choose **Altek Depth 16bits**, then enter the image resolution (ex. “Width”: **1280**, “Height”: **720**)
5. In the last selection menu, choose **“Gray (Auto)”** for a grayscale depth map, or **“Color (Auto 1)”** for a Color shaded depth map

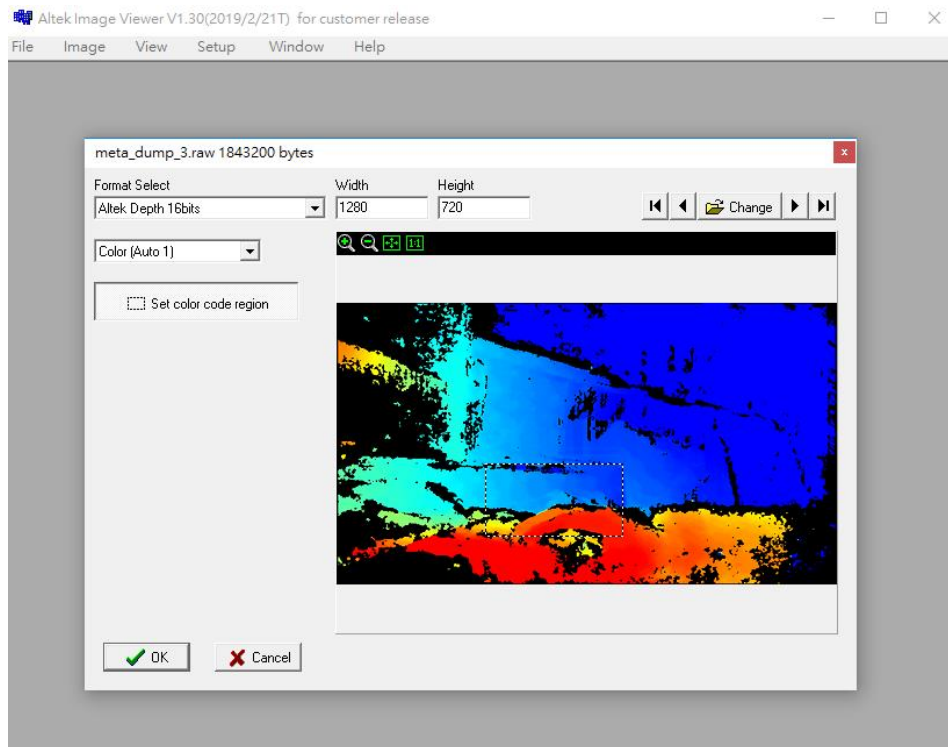


“Gray (Auto)” – Grayscale



“Color (Auto 1)” – Color gradient

- Optionally for all “Auto” Formats, to tailor the grayscale or color shade range of the depth map to a specific portion of the image, select “**Set color mode region**” then click and drag the cursor over the desired part of the depth map; the grayscale or color shade gradient will auto-scale to the defined depth map range



- When desired depth map is obtained, click “**OK**”, and disparity depth map will show up in an individualized UI; hovering the cursor over any pixel in the depth map will display the **disparity value** for that pixel at the bottom of the UI (red box)

