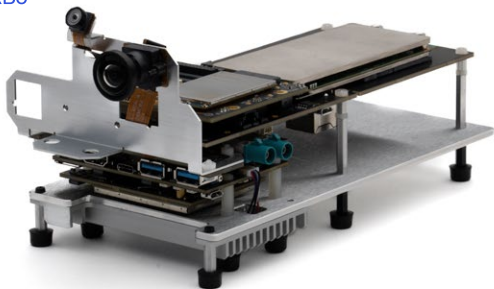


Qualcomm
robotics RB6
platform



Qualcomm Robotics RB6 Development Kit

Advanced robotics platform featuring Qualcomm® QRB5165N processor with high-performance heterogeneous compute, artificial intelligence engine, computer vision, vault-like security, multimedia, and connectivity including Bluetooth®, Wi-Fi, and 4G/5G.

Setup Guide

RB6DK-SG-01

Qualcomm® Robotics RB6 Development Kit

Component list

01 Qualcomm Robotics RB6 Development Kit

- A: QRB5165N SOM (system on module) board
- B: Qualcomm Robotics RB6 mainboard
- C: Vision mezzanine board
- D: AI mezzanine board
- E: Mezzanine expansion connectors
- F: IMX577 main camera
- G: OV9282 tracking camera
- H: Power supply input (12V)
- I: AIC100 module

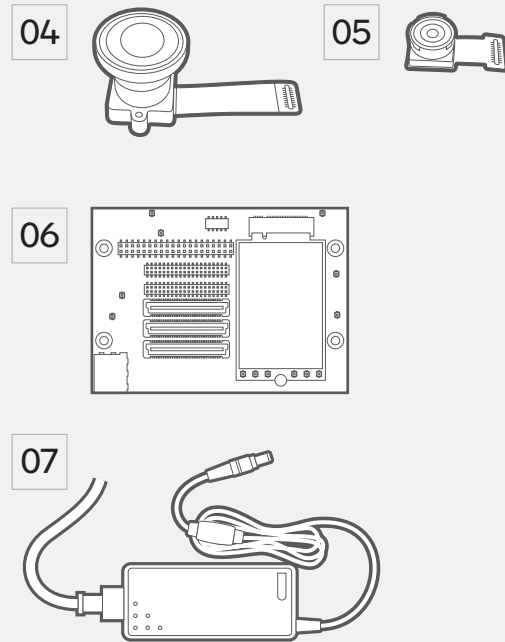
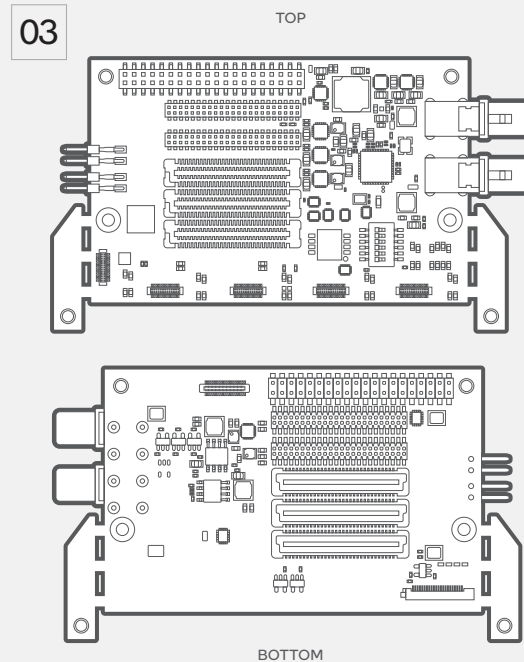
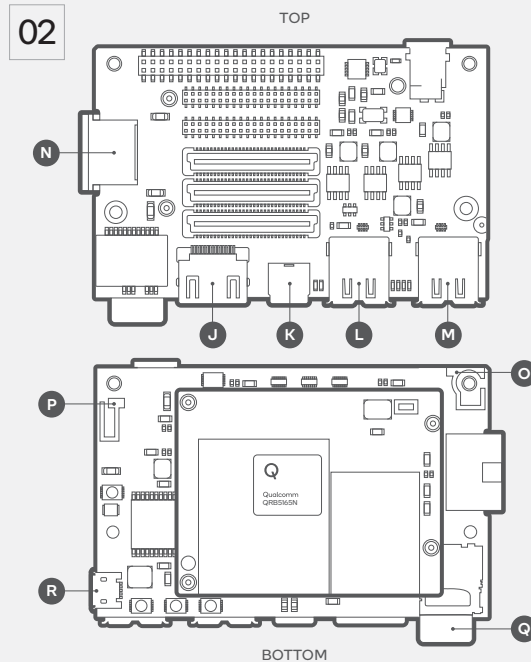
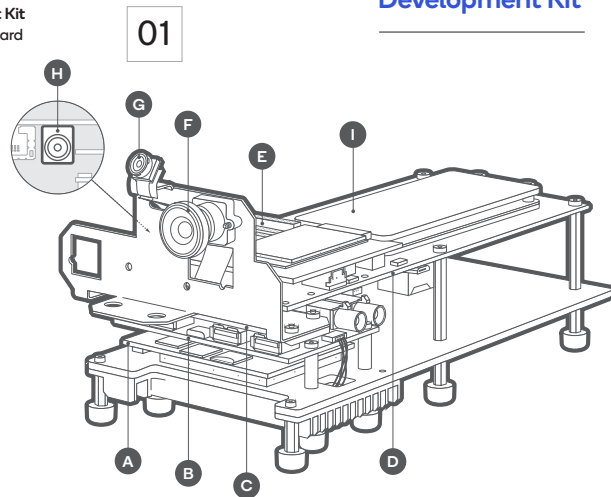
02 Qualcomm Robotics RB6 Mainboard

- J: HDMI type A
- K: USB type C
- L: USB type A (host mode)
- M: USB type A (host mode)
- N: RJ45 Ethernet connector
- O: 2.4/5GHz Wi-Fi/BT Antenna 0
- P: 2.4/5GHz Wi-Fi/BT Antenna 1
- Q: MicroSD card
- R: Micro USB debug connector

03 Vision Mezzanine board

- 04 IMX577 main camera
- 05 OV9282 tracking camera
- 06 5G mezzanine (optional accessory)
- 07 Power supply (12V)

This Setup Guide helps you use the Qualcomm Robotics RB6 Development Kit

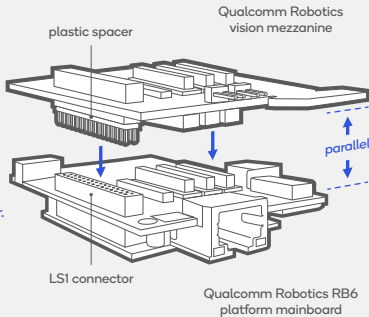


Important!

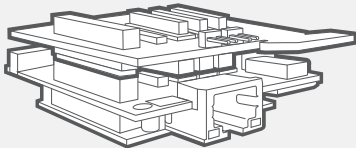
To **CONNECT**
mezzanine board to Qualcomm
Robotics RB6 carrier board:

*Ensure plastic
spacer is present on
LSI connector.*

*Ensure all connectors
are properly aligned
and boards are
parallel with each other.*



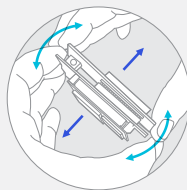
*Press down firmly
to squeeze
boards together
(avoid pressing in
center of SOM board).*



To **REMOVE**
mezzanine board to Qualcomm
Robotics RB6 carrier board:

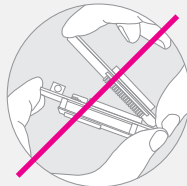
*Grasp both boards
firmly and wiggle
up and down to
gradually loosen
the connectors
(note boards are
very tight).*

*Pull boards
straight apart.*



*Do not pry
boards apart.*

*This will result in
damage to pins.*



Downloading and installing Qualcomm Robotics RB6 Development Kit Tools and Resources

Product info

For resources to help you kickstart your robotics development, please visit:

<https://developer.qualcomm.com/qualcomm-robotics-rb6-kit>

Community forums

<https://developer.qualcomm.com/forums/qdn-forums/hardware/robotics-rb6-dev-kit>

Additional resources:

[Robotics RB6 Development Kit](#)

[Quick Start Guide](#)

[Hardware Reference Guide](#)

[Software Reference Manual](#)

Qualcomm
robotics RB6
platform

developer.qualcomm.com

Qualcomm Robotics RB6 and Qualcomm QRB5165N are products of Qualcomm Technologies, Inc. and/or its affiliates. Other products and brand names may be trademarks or registered trademarks of their respective owners.

©2022 Qualcomm Technologies, Inc. and/or its affiliated companies. All rights reserved. This technical data may be subject to U.S. and international export, re-export, or transfer ("export") laws. Diversion contrary to U.S. and international law is strictly prohibited.